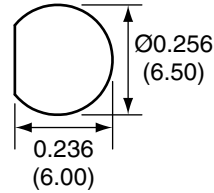
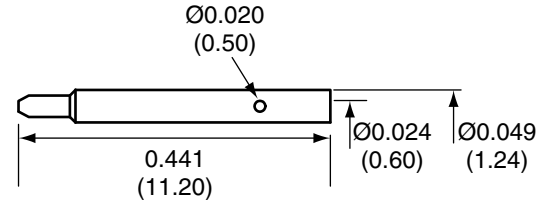


| 1           |           |        |
|-------------|-----------|--------|
| Description | Material  | Finish |
| Body        | Brass     | Nickel |
| Pin         | Brass     | Gold   |
| Insulation  | Teflon    | Teflon |
| O Ring      | Si Rubber | Rubber |
| Crimp Ring  | Brass     | Nickel |
| Washer      | Brass     | Nickel |
| Nut         | Brass     | Nickel |

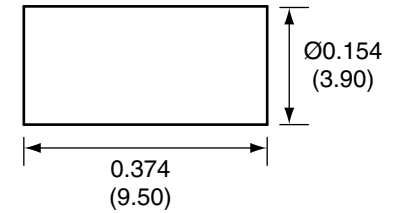
2  
RECOMMENDED MOUNTING HOLE



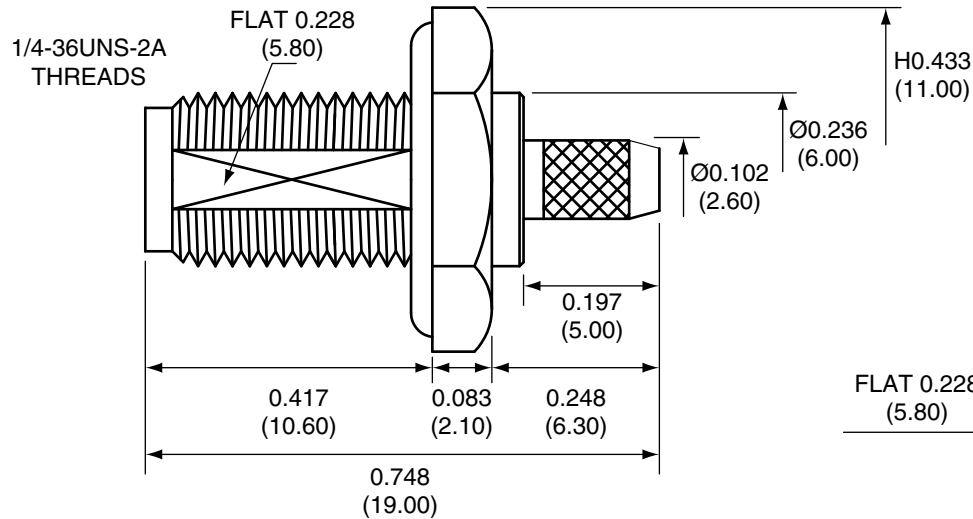
3  
PIN



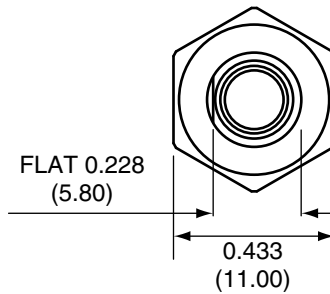
4  
CRIMP RING



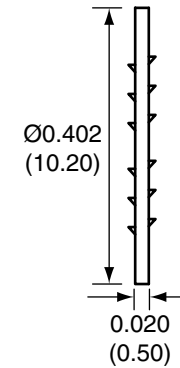
SIDE VIEW



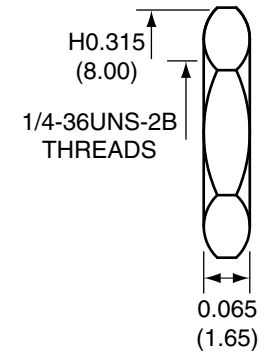
BACK VIEW



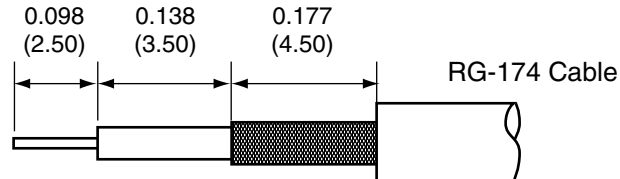
WASHER



NUT



RECOMMENDED CABLE STRIPPING DIMENSIONS



CONREVSMA014 ASSEMBLY INSTRUCTIONS

1. Solder the pin to the center conductor.
2. Insert the pin, center conductor, and insulation into the body.
3. Wrap the braid around the tail of the body and crimp the ring with a 0.137" hex crimp tool (or one labeled for use with RG-174 cable).

Title RP-SMA FEMALE BULKHEAD MOUNT CABLE  
END CRIMP WITH O-RING FOR RG174 CABLE

Part No. CONREVSMA014

Revision: 1.0

Dimensions: INCHES (mm)

Date: 6/1/2006

CONNECTOR CITY  
159 ORT LANE  
MERLIN, OR 97532  
PH (541)-471-6256  
FAX (541)-471-6251

Sheet 1 of 1

**CONNECTOR CITY**  
THE VALUE OF CONNECTIONS